

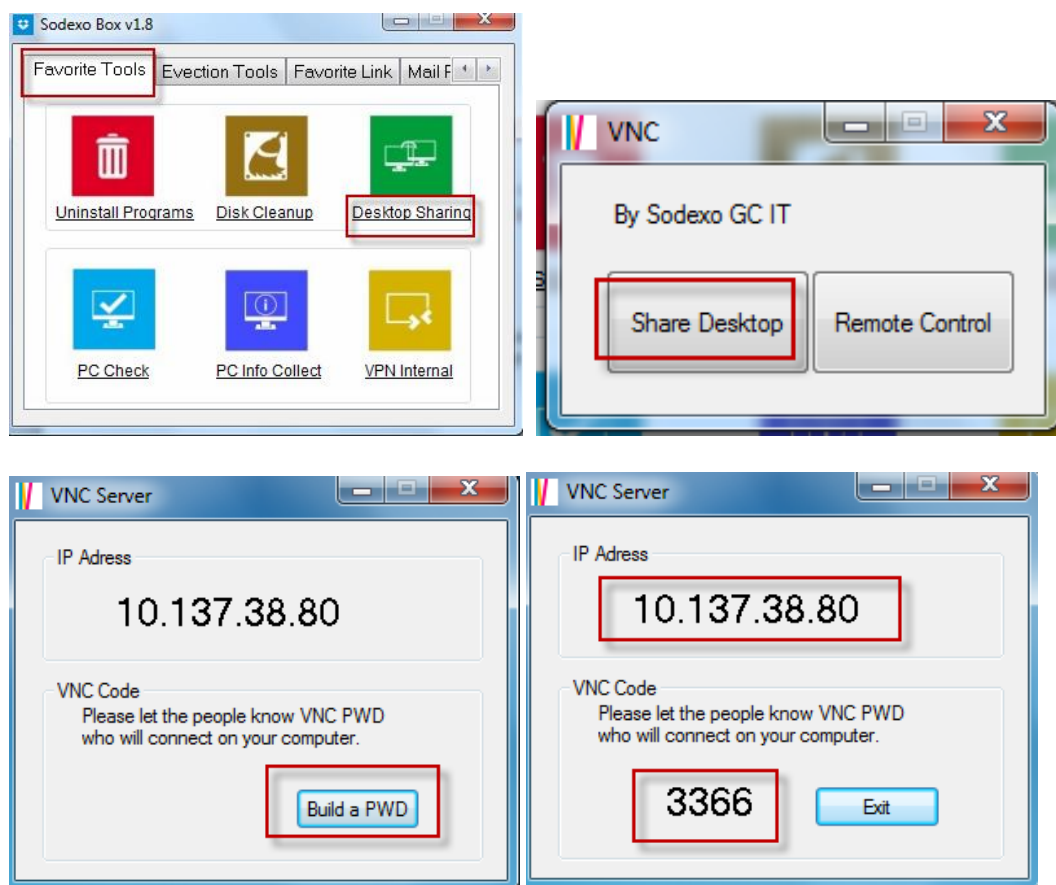
How to use Sodexo box get remote assistance?

In dealing with computer problems, IT needs to help you via a remote connection method. This time, we will show you how to use Sodexo box get remote assistance.

Steps:

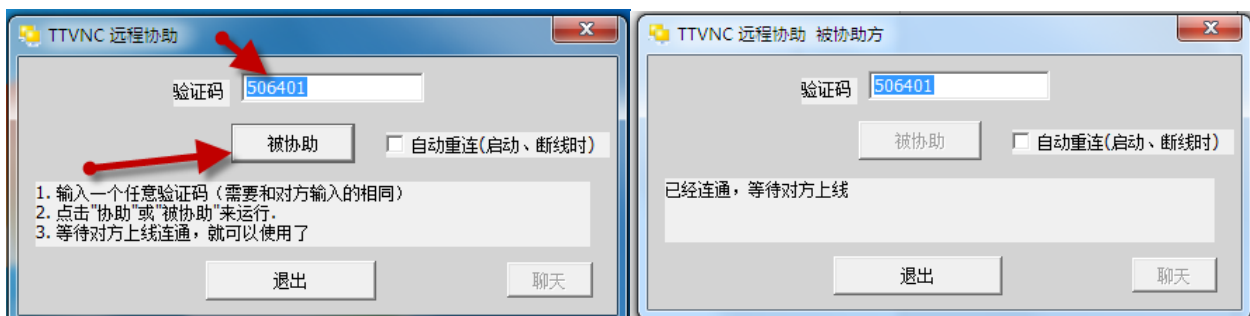
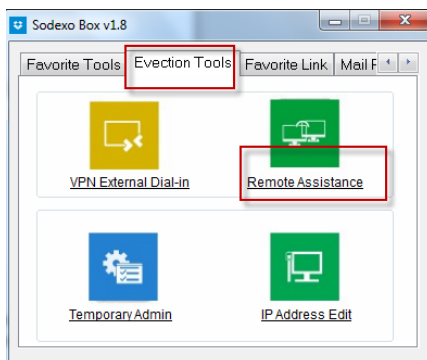
In office

Open **Sodexo box**, select **Favorite Tools** → **Desktop Sharing**, select **Share Desktop**, click **Build a PWD**, then tell us the IP address and password to connect your computer.

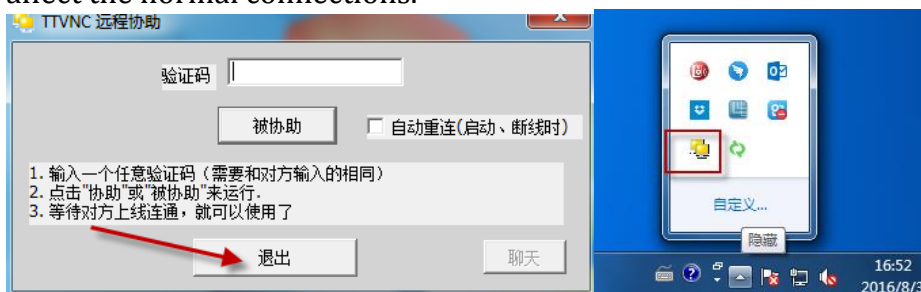


Out of office

Open **Sodexo box**, then select **Evection Tools** → **Remote Assistance**,
Enter a verification code in the textbox area and click **Help** button. Then tell us the code
connect to your computer. For example '506401'.



Note: Ensure only one remote assistance tool at work, you can see that on the toolbar interface. If there are other remote assistance not be closed, please "exit" it, Otherwise it will affect the normal connections.



See you next week.