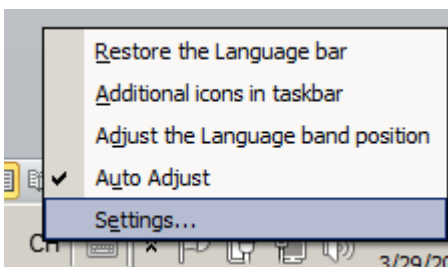


How to change the input languages

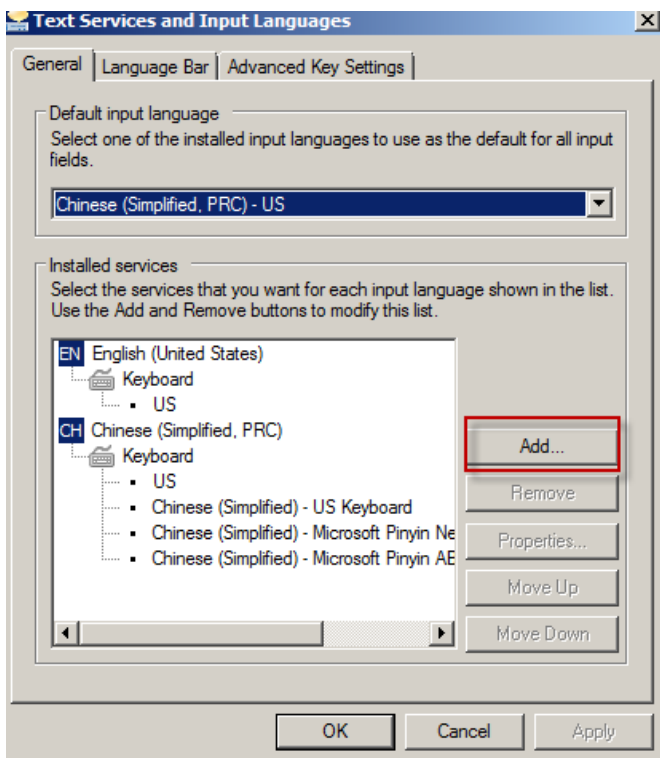
Whether we have encountered this situation: when you log on a computer, only the default input method. This time we will tell you how to change it.

Step :

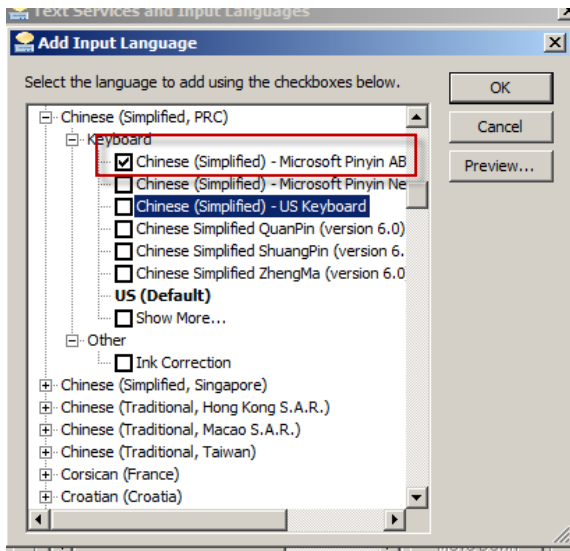
1. right-click the language bar, select "settings"



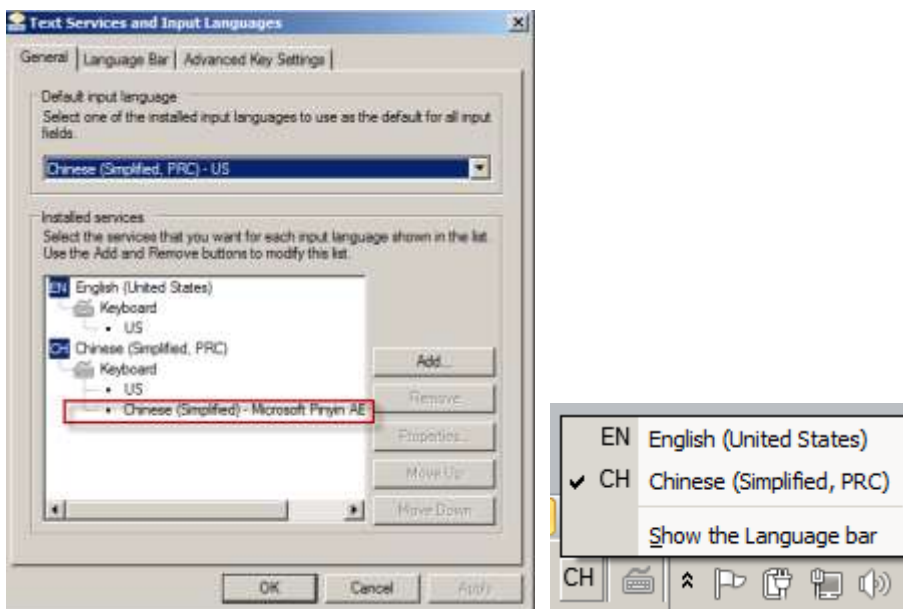
2. the SETTINGS, click "add"



3. Drop down scroll bar, find the "Chinese (simplified, PRC)", according to your needs choose the input method , and then click OK.



3. Then you can set the appropriate input method, click "OK" to complete the operation.



See you next week.